

Scheme Editor

Installing Instructions

1 Notice

1.1 Supported Operating Systems

The Scheme Editor is tested to support the following 32-bit and 64-bit operating systems:

- Microsoft® Windows Vista®
- Microsoft® Windows 7®
- Microsoft® Windows 8®
- Microsoft® Windows 10®

All information provided in the installation instructions refer to **Microsoft® Windows 7®**.

1.2 Necessary User Privileges

You **don't** need administrator privileges to install the Scheme Editor.

Note:

The application needs the Microsoft® .NET Frameworks 4.5 to run. The setup checks if the installation of this framework is necessary. To install this framework you need administrator privileges.

1.3 Product Page

The product page supports the setup routine, the latest release notes, an application manual and a functional overview. You can find the product page at:

<http://www.boschrexroth.com/DnC-Scheme-Editor>

1.4 Contact

For questions regarding installing or using the application please contact us at:

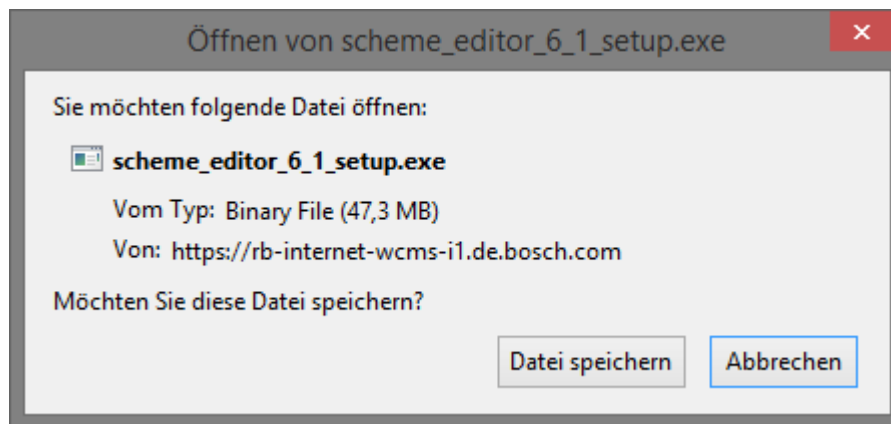
support.dnc-scheme-editor@boschrexroth.de

2 Get Scheme Editor

You can download the Scheme Editor from our product page

<http://www.boschrexroth.com/DnC-Scheme-Editor> using the provided download link.

We recommend you to save the setup to your hard disk using the **Save** Button of your internet browser file download dialog:

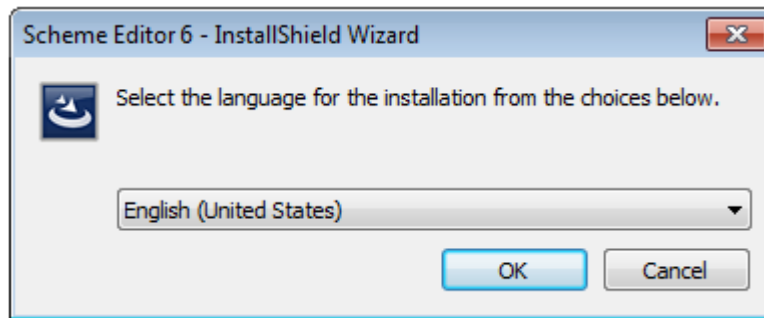


Note:

The layout of the file download dialog depends on your browser and your security settings.

3 Installation

After downloading, start the setup program to start the installation. You can choose the language used only for the installation process; this will not affect the application language.



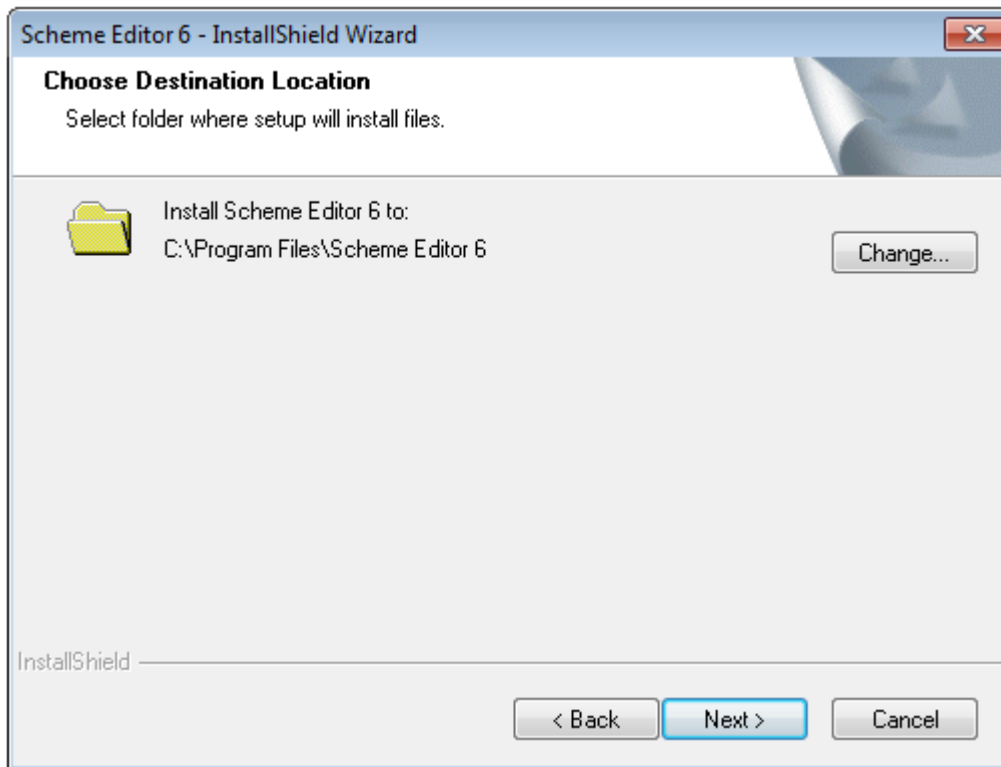
3.1 New Installation

Click **OK** to jump to the "Welcome page" and jump to the "Destination Location site" using the **Next** button. By default the program will be installed with administrator rights in

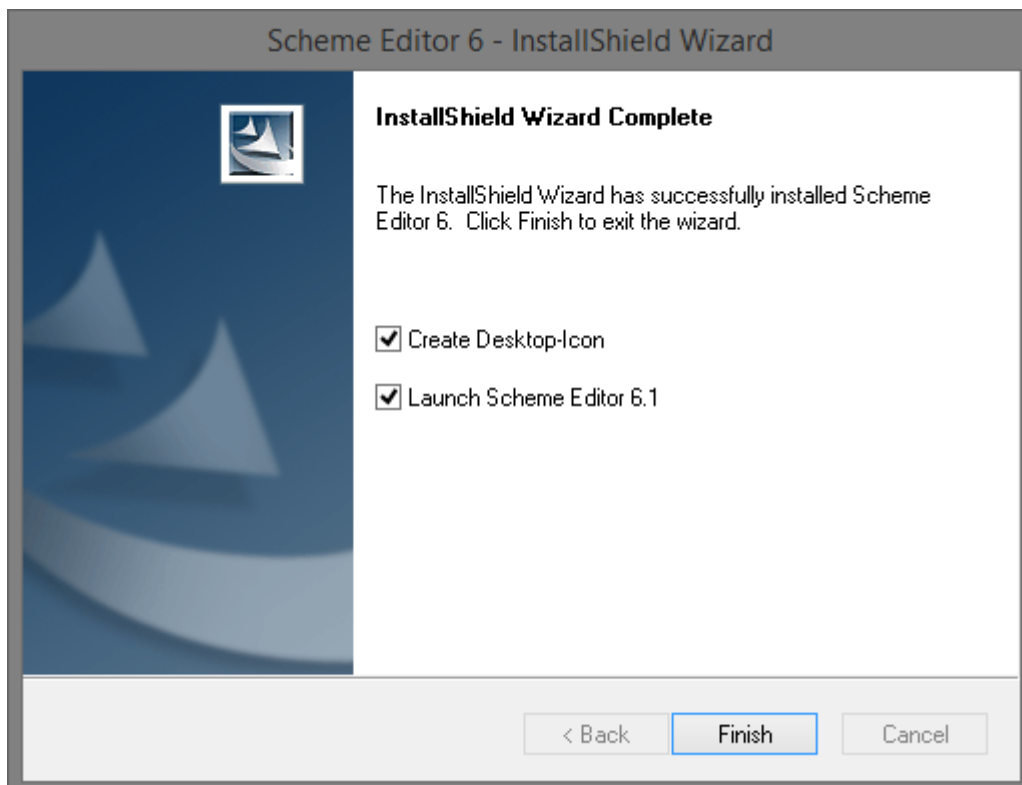
C:\Program Files (x86)\Scheme Editor 6

Without administrator rights in

C:\Users\<username>\Roaming\Scheme Editor 6



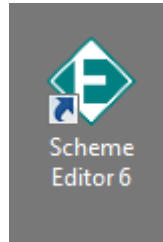
Click the button **Change...** to choose another installation folder. Use the button **Next** to jump to the next installation step, start the installation by clicking the **Install** button and start the application using the **Finish** button.



4 Start Application

4.1 Scheme Editor

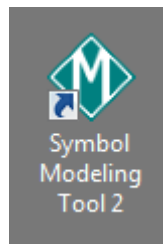
Just double-click the application icon created on your desktop to start the Scheme Editor:



Alternatively, you can start the application by clicking the windows start menu entry **Start \ Scheme Editor 6 \ Scheme Editor 6**.

4.2 Symbol Modeling Tool

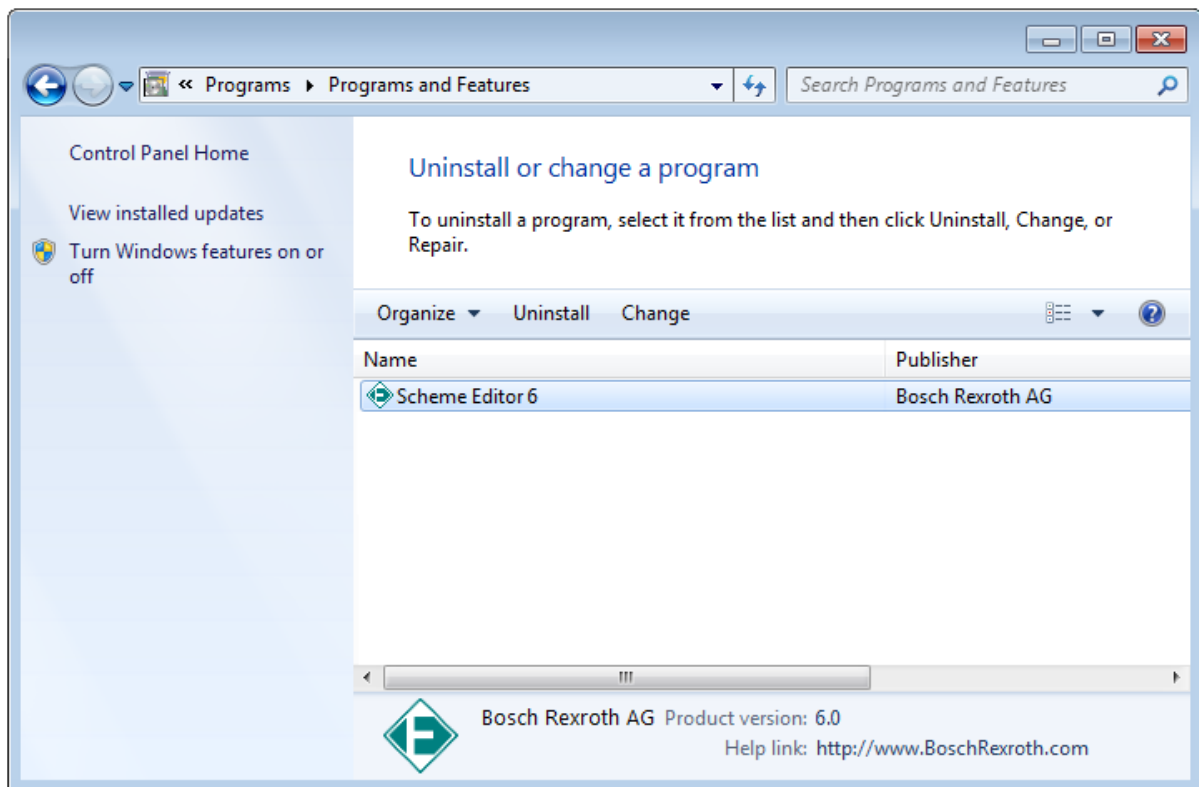
Just double-click the application icon created on your desktop to start the Symbol Modeling Tool:



Alternatively, you can start the application by clicking the windows start menu entry **Start \ Scheme Editor 6 \ Symbol Modeling Tool 2**.

5 Remove the Application

To remove the application from your computer, use the Windows System Control Panel and choose **Uninstall or change a program**. Select the Scheme Editor 6 application and click the **Remove** button.



Notice:

User defined settings and libraries will not be removed and will be available for new installation. If you want a “clean” installation in delivery status these files must be removed manually. You can find these settings in:

C:\Users

|- <username>

|- AppData

|- Roaming

|- Scheme Editor 6.<version>

|- CurrentSettings

A second way to remove the application from your computer is to start the setup program again and to choose the **Remove** option.

